

**CLAREMONT NURSING AND REHABILITATION CENTER (CNRC)
BOARD MEETING MINUTES**

**Monday, June 29, 10:00 a.m.
Commissioners Hearing Room**

Present: Commissioner Gary , Commissioner Jean Foschi; Commissioner Vincent T. DiFilippo; Stacy Snyder, Deputy Chief Clerk; Jen Crum, Administrative Specialist; Heather Raisig, Melissa Smith, Helen Schultz, Ben Boyer, Brad King, Tammy Schell, CNRC; Dana Best, Ron Snow, Finance; Holly Sherman, Human Resources; Jean Foschi, Citizen.

Call to Order: Commissioner Eichelberger called the meeting to order.

Roll Call: Commissioner Eichelberger, Commissioner Foschi, Commissioner DiFilippo.

Public Comment: None

Approval of Minutes: Commissioner Foschi made a motion to approve the CNRC Minutes of May 26, 2020. Commissioner DiFilippo seconded the motion and it unanimously carried.

CNRC Staffing: Tammy Schnell reviewed the staffing reports. In total, there were 25 new hires in the month of May. (see attached – pages 4 - 14)

Admission and Referrals Report – May 2020: Helen Schultz reviewed the report as written (see attached – page 15).

Financial Report – May 2020: Melissa Smith reviewed the financial summary for May (see attached – page 15)

Nursing Report: Heather Raisig provided a nursing update. The CDC conducted a site visit and interviewed staff. No formal report was provided from the visit, but they provided suggestions to educate staff. Since the universal testing in May, residents are being screened two times a day.

Discussion ensued regarding staff that tested positive for COVID and steps that could be taken prior to hiring. The Department of Health provided a three-step process regarding visitations. Besides COVID-19, Heather reported there has also been a GI outbreak in the facility. She reported they have implemented all appropriate safeguard measures.

Other Business/Discussion:

FSES Update: Brad King stated that a decision regarding FSES building type waiver from CMS will be the end of the year.

Capital Improvement Projects/Tower Building: Brad King reviewed the capital project for a Massy Ferguson Tractor. They have spent approximately \$10,000 in repairs in a 12 year period.

Donations: Melissa Smith listed the donations to the nursing home. (see attached – pages 16 – 21)

Commissioner Foschi made a motion to approve the six donations. Commissioner DiFilippo seconded the motion and the motion carried.

CNRC Updates: Heather Raisig provided a CNRC update:

- Staff Management assisted with distribution of food and totes that were given to employees to celebrate Skilled Nursing Week.
- The Department of Health conducted a survey regarding infection control.

Adjournment: There being no further business to come before the Board the meeting adjourned.

Respectfully Submitted,

Jennifer Crum
Administrative Specialist

HRR-19b (County Employment Status - Commissioners)

6/19/20 4:56 pm
Page 1 of 1

*** Nursing Home Only ***

For the Period Beginning 05/01/2020 and Ending 05/31/2020

Hires

FT

	<u>Hire Date</u>	<u>Emp</u>	<u>PL</u>	<u>Dept</u>	<u>Position</u>	<u>Title</u>
1	5/6/2020	12381	NHOME	DIET	NH3209	Dietary Aide
2	5/20/2020	11255	NHOME	SKNR1	NH3148	C.N.A.
3	5/20/2020	12390	NHOME	SOCSR	NH2059	Human Services Case Manager

PER DIEM

	<u>Hire Date</u>	<u>Emp</u>	<u>PL</u>	<u>Dept</u>	<u>Position</u>	<u>Title</u>
1	5/20/2020	12391	NHOME	ACTVY	NH5094	Activities Worker- TEMP
2	5/20/2020	12392	NHOME	SKNR1	NH5101	Un-Certified Nurse Aide- TEMP.

PT

	<u>Hire Date</u>	<u>Emp</u>	<u>PL</u>	<u>Dept</u>	<u>Position</u>	<u>Title</u>
1	5/6/2020	12382	NHOME	DIET	NH8059	Dietary Aide PT

Terms

FT

	<u>Term Date</u>	<u>Emp</u>	<u>PL</u>	<u>Dept</u>	<u>Position</u>	<u>Title</u>	<u>Rehire Elig</u>	<u>Reason Code</u>
1	5/1/2020	6162	NHOME	SOCSR	NH2060	Human Services Case Manager	N	TV-RETIRE
2	5/7/2020	12325	NHOME	SKNRH	NH3099	C.N.A.	N	TV-OTHER
3	5/8/2020	11551	NHOME	NRADM	NH3311	C.N.A. Transportation Aide	O	TV-OTHER
4	5/9/2020	3950	NHOME	SKNR1	NH3151	C.N.A.	Y	TV-RETIRE
5	5/19/2020	12380	NHOME	SKNR1	NH3068	C.N.A.	N	TV-OTHER

PER DIEM

	<u>Term Date</u>	<u>Emp</u>	<u>PL</u>	<u>Dept</u>	<u>Position</u>	<u>Title</u>	<u>Rehire Elig</u>	<u>Reason Code</u>
1	5/19/2020	12113	NHOME	SKNR1	NH9104	C.N.A. PRN	Y	TV-RELOCAT
2	5/23/2020	12375	NHOME	SKNR1	NH5052	C.N.A-Temp.	N	TV-UNKNOWN

PT

	<u>Term Date</u>	<u>Emp</u>	<u>PL</u>	<u>Dept</u>	<u>Position</u>	<u>Title</u>	<u>Rehire Elig</u>	<u>Reason Code</u>
1	5/20/2020	11575	NHOME	HOUSK	NH8028	Housekeeping Aide PT	Y	TV-OTHER
2	5/20/2020	11820	NHOME	HOUSK	NH8009	Housekeeping Aide PT	Y	TV-OTHER
3	5/26/2020	12125	NHOME	LNDRY	NH8020	Laundry Aide PT casual	N	TV-UNKNOWN
4	5/27/2020	12352	NHOME	ACTVY	NH8090	LTC Recreation Specialist PT	O	TV-OTHER

Recruitment and Retention Meeting

06/23/2020

Recruitment

- Recruitment signs-they have arrived. We are holding off putting them outside because the signs do say "stop in".
- Temp. positions update-6 additional hyrell applications and 24 facebook applications since the last meeting(all have been contacted by HR)*still scheduled to end on 09/12/2020, Tammy and Derek will discuss where to go with these position after the end date*
- Positions have been posted multiple locations in Cumberland County
- Un-Certified Nurse Aide position- 13 hyrell applications and 4 facebook applications since the last meeting *positions will also end 09/12/2020*
- Heather is keeping up with the regulations with these positions, there has been talk about them being "grandfathered" in after Covid
 - Comments regarding Uncertified Nurse Aides
- So far, the new uncertified nurse aides that have been hired are doing very well and looking to advance their careers – Robin Tolan
- There has not been any negative feedback from the staff-Ida Barnhart
- Learning as we go, work in progress, but so far it has been going well-Robin Tolan
- Virtual Walk-In-Wednesday
 - Derek has had 4 prospective applicants, one already has been hired.
- ABC27 news virtual job fair (Derek has not heard back from Communications on the cost, etc, he will reach out to them again)
- HACC C.N.A classes (HACC has given approval for an onsite class, however, HACC only has virtual learning until January 1, 2021.) We have to have a minimum of 7 individuals for a class.
- Sign on/Referral Bonus'- are still currently on hold.
- Advertising is needed for LPN's and RN's in the community? How are others advertising? Need to do some research from our competitors?
 - *The need is high for LPN and RN at Claremont.HR will look into more recruitment.*
- Paid facebook ads are running and are doing well. The ads will run June 1 through the end of August, 2020.
- Interviews- Derek and Steph are currently doing all interviews.
- Revised Grow your Own-salary board has approved, however, we are still waiting for Union approval. Stay tuned for more information
- Non-Union employees (Temporary employees, Un-certified nurse aids, up to 15) are going to be sponsored by Claremont to attend the C.N.A class. We are still waiting for the Union to be notified.
- Currently looking for other positions within Claremont, please see the website for all open positions.
- New hires numbers- we have had 25 new hires in the last month through July 1, 2020.
- Open Discussion
 - Are we asking where applicants have worked previously, due to Covid?
 - Should we be promoting that we are Covid free?
 - New Hire orientations- 10 max for class, 3 uncertified nurse aides max

Next meeting is Wednesday July 15, 2020.

C.N.A JOB POSTINGS

Heritage Harbor

posting#	Job Title	FT/PT	Shift	Weekend	Date posted	Close Date
NH3124	C.N.A	FT	6:30P-7A	B	OPEN	until filled
NH3145	C.N.A	FT	6:30P-7A	A	OPEN	until filled
NH3136	C.N.A	FT	2:30P-11P	A	OPEN	until filled
NH3035	C.N.A	FT	2:30p-11p	B	OPEN	until filled
NH3099	C.N.A	FT	2:30p-11p	A	OPEN	until filled
NH3044	C.N.A	FT	6:30p-7a	EW	OPEN	until filled

C-WING

NH3122	C.N.A	FT	2:30P-11P	A	OPEN	until filled
NH3069	C.N.A	FT	6:30a - 3p	B	OPEN	until filled

1ST FLOOR

NH3120	C.N.A	FT	6:30P-7A WP		OPEN	until filled
NH3094	C.N.A	FT	2:30P-11P	B	OPEN	until filled
NH3159	C.N.A	FT	630a-3p	A	6/23/2020	7/3/2020

2ND FLOOR

NH3139	C.N.A	FT	2:30P-11P	A	OPEN	until filled
NH3052	C.N.A	FT	2:30P-11P	A	OPEN	until filled
NH3286	C.N.A	FT	230p-11p	B	OPEN	until filled

3RD FLOOR

NH3039	C.N.A	FT	2:30P-11P	A	OPEN	until filled
NH3098	C.N.A	FT	2:30P-11P	B	OPEN	until filled

TRANSITIONS

NH3089	C.N.A	FT	2:30P-11P	A	OPEN	until filled
NH3111	C.N.A	FT	6:30A-3P	B	OPEN	until filled
NH3129	C.N.A	FT	630a-3p	B	OPEN	until filled
NH3157	C.N.A	FT	2:30P-11P	B	OPEN	until filled
NH3044	C.N.A	FT	6:30p-7a WP		OPEN	until filled

FLOATS

NH3068	C.N.A	FT	10:30P-7A	A	OPEN	until filled
NH3042	C.N.A	FT	2:30P-11P	B	OPEN	until filled
NH3142	C.N.A	PT	2:30P-11P	A	OPEN	until filled
NH3168	C.N.A	FT	11A-11P	B	OPEN	until filled
NH3173	C.N.A	FT	11A-7P	A	OPEN	until filled
NH3267	C.N.A	FT	3P-3A	B	OPEN	until filled
NH3133	C.N.A	FT	2:30a-3p	B	OPEN	until filled
NH3034	C.N.A	FT	6:30A-3P	B	OPEN	until filled
NH3093	C.N.A	FT	6:30A-3P	B	OPEN	until filled
NH3198	C.N.A	FT	6:30A-3P	A	6/18/2020	6/28/2020

RNP

NH3101	C.N.A	FT	6:30A-3P	A	OPEN	until filled
NH3151	C.N.A	FT	6:30A-3P	A	OPEN	until filled
NH3085	C.N.A	FT	6:30A-3P	B	OPEN	until filled
NH3289	C.N.A	FT	6:30A-3P	B	6/18/2020	6/28/2020

LPN POSTINGS

posting# Job Title FT/PT Shift Weekend Date posted Close Date

Transitions

NH2042	LPN	FT	6:30P-7A	B	OPEN	UNTIL FILLED
--------	-----	----	----------	---	------	--------------

Heritage Harbor

NH2038	LPN	FT	6:30p-7a	A	OPEN	UNTIL FILLED
--------	-----	----	----------	---	------	--------------

1ST FLOOR

NH2041	LPN	FT	630p-7a	B	OPEN	UNTIL FILLED
NH2053	LPN	FT	6:30a-3p	A	6/23/2020	7/3/2020

C-Wing

NH2017	LPN	FT	6:30a-7p	A	OPEN	UNTIL FILLED
NH2069	LPN	FT	6:30p-7a	A	6/23/2020	7/3/2020
NH2009	LPN	FT	6:30p-7a	B	6/23/2020	7/3/2020

offered

FLOATS

NH2043	LPN	FT	2:30P-11P	B	OPEN	UNTIL FILLED
NH2030	LPN	FT	2:30P-11P	B	OPEN	UNTIL FILLED
NH2047	LPN	FT	2:30P-11P	A	OPEN	UNTIL FILLED
NH2034	LPN	FT	2:30P-11P	A	OPEN	UNTIL FILLED
NH8027	LPN	PT	6:30A-3P	A	OPEN	UNTIL FILLED
NH8054	LPN	PT	2:30P-11P	B	OPEN	UNTIL FILLED
NH2095	LPN	FT	6:30A-7P	A	OPEN	UNTIL FILLED

PRN CASUAL POSITIONS

C.N.A.

<u>posting#</u>	<u>Job Title</u>	<u>FT/PT</u>	<u>Date posted</u>	<u>Close Date</u>
NH9122	C.N.A.	PRN	6/17/2020	6/27/2020

LPN

<u>posting#</u>	<u>Job Title</u>	<u>FT/PT</u>	<u>Date posted</u>	<u>Close Date</u>
NH9125	LPN	PRN	OPEN	UNTIL FILLED
NH9123	LPN	PRN	OPEN	UNTIL FILLED

 Offered |

RN Postings

posting#	Shift	Job Title	Weekend	FT/PT	Date posted	Close Date
NH3138	630p-7a	RN	A	FT		UNTIL FILLED
NH8111	10:30P-7AM	RN	A	PT	OPEN	UNTIL FILLED
NH8112	6:30A-3P	RN	FRI, SAT,SUN B	PT	OPEN	UNTIL FILLED
NH8113	2:30P-11P	RN	A	PT	OPEN	UNTIL FILLED
NH8110	11a-7p	RN	A	PT	OPEN	UNTIL FILLED
NH3028	630p-7a	RN	B	FT	OPEN	UNTIL FILLED
NH3303	230p-11p	RN	B	FT	OPEN	UNTIL FILLED

RN PRN SUPERVISOR

posting #	department	job title	PRN	date posted	close date
NH9115	NURSING	RN SUPERVISOR	PRN	open	until filled
NH9092	NURSING	RN SUPERVISOR	PRN	open	until filled
NH9018	NURSING	RN SUPERVISOR	PRN	open	until filled

offered
offered

RESIDENT AIDE

CNRC INTERNAL JOB POSTING

<u>posting #</u>	<u>department</u>	<u>SHIFT</u>	<u>job title</u>	<u>WEEKEND</u>	<u>FLOOR</u>	<u>ft/pt</u>	<u>date posted</u>	<u>close date</u>
NH3315	NURSING	days/evening	Resident Aide	EOW	FLOAT	FT	open until	filled
NH3317	NURSING	days/evening	Resident Aide	EOW	FLOAT	FT	open until	filled
NH3314	NURSING	days/evening	Resident Aide	EOW	FLOAT	FT	open until	filled
NH8120	NURSING	days/evening	Resident Aide	EOW	FLOAT	PT	open until	filled

Offered

Offered

Offered

Temporary PRN/Casual Positions

C.N.A. Temp/PRN

posting#	Job Title	FT/PT	Shift	Weekend	Date posted	Close Date
NH5055	C.N.A. Casual - Temp				Open	until filled
NH5056	C.N.A. Casual - Temp				Open	until filled
NH5052	C.N.A. Casual - Temp				6/3/2020	6/18/2020

UNCERTIFIED NURSE AIDE-TEMP/PRN

NH5109	Uncertified Nurse Aide				Open	until filled	Offered
NH5110	Uncertified Nurse Aide				Open	until filled	
NH5111	Uncertified Nurse Aide				Open	until filled	
NH5112	Uncertified Nurse Aide				Open	until filled	
NH5113	Uncertified Nurse Aide				Open	until filled	
NH5114	Uncertified Nurse Aide				Open	until filled	
NH5115	Uncertified Nurse Aide				Open	until filled	

LPN Charge Nurse TEMP/PRN

NH5057	L.P.N. Charge Nurse Casual - Temp				Open	until filled
NH5058	L.P.N. Charge Nurse Casual - Temp				Open	until filled
NH5059	L.P.N. Charge Nurse Casual - Temp				Open	until filled
NH5060	L.P.N. Charge Nurse Casual - Temp				Open	until filled
NH5061	L.P.N. Charge Nurse Casual - Temp				Open	until filled
NH5062	L.P.N. Charge Nurse Casual - Temp				Open	until filled

RN Supervisor Temp/PRN

NH5063	Nursing Supervisor Casual - Temp				Open	until filled
NH5064	Nursing Supervisor Casual - Temp				Open	until filled
NH5065	Nursing Supervisor Casual - Temp				Open	until filled
NH5066	Nursing Supervisor Casual - Temp				Open	until filled
NH5067	Nursing Supervisor Casual - Temp				Open	until filled
NH5068	Nursing Supervisor Casual - Temp				Open	until filled

Resident Aide Temp/PRN

NH5071	Resident Aide Casual - Temp				Open	until filled	Offered
NH5072	Resident Aide Casual - Temp				Open	until filled	
NH5073	Resident Aide Casual - Temp				Open	until filled	
NH5074	Resident Aide Casual - Temp				Open	until filled	

Housekeeping Aide Temp/PRN

NH5075	Housekeeping Aide Casual - Temp			Open	until filled
NH5076	Housekeeping Aide Casual - Temp			Open	until filled
NH5077	Housekeeping Aide Casual - Temp			Open	until filled
NH5078	Housekeeping Aide Casual - Temp			Open	until filled
NH5079	Housekeeping Aide Casual - Temp			Open	until filled
NH5080	Housekeeping Aide Casual - Temp			Open	until filled

Laundry Aide Temp/PRN

NH5081	Laundry Aide Casual - Temp			Open	until filled
NH5082	Laundry Aide Casual - Temp			Open	until filled
NH5083	Laundry Aide Casual - Temp			Open	until filled
NH5084	Laundry Aide Casual - Temp			Open	until filled
NH5085	Laundry Aide Casual - Temp			Open	until filled
NH5086	Laundry Aide Casual - Temp			Open	until filled

Dietary Aide Temp/PRN

NH5087	Dietary Aide Casual - Temp			Open	until filled
NH5088	Dietary Aide Casual - Temp			Open	until filled
NH5089	Dietary Aide Casual - Temp			Open	until filled
NH5090	Dietary Aide Casual - Temp			Open	until filled
NH5091	Dietary Aide Casual - Temp			Open	until filled
NH5092	Dietary Aide Casual - Temp			Open	until filled

Activities Worker Temp/PRN

NH5095	Activities Worker Casual - Temp			Open	until filled
NH5096	Activities Worker Casual - Temp			Open	until filled
NH5097	Activities Worker Casual - Temp			Open	until filled
NH5098	Activities Worker Casual - Temp			Open	until filled

Maintenance Workers I--Temp/PRN

NH5099	Maintenance Worker I Casual - Temp			Open	until filled
NH5100	Maintenance Worker I Casual - Temp			Open	until filled

Offered

**Summary of Referrals and Admissions
and other Pertinent Data
May-20**

APPROVALS	May-20	Apr-20	Mar-20
Admitted	0	2	26
Pending admission	0	0	4
discharged home	0	1	5
sent to other SNF	0	5	22
No Beds	2	4	1
Insurance	0	0	2
Pending decision	0	1	7
Respite	0	0	0
Other	0	0	4

DENIALS	May-20	Apr-20	Mar-20
Bariatric	2	0	1
Medical	13	18	17
Behavioral	12	15	18
No Beds	40	23	31
Insurance	11	9	12
Cost of Care/Meds	1	3	7
PDPM	0	1	4
Dialysis	12	11	5
Other	2	6	15
COVID	60	55	0

Total Referrals			
Approvals	2	13	71
Denials	153	141	110
	155	154	181

ADMISSIONS			
Current month referrals	0	2	26
Waiting list	0	0	1
Previous month referrals	0	4	2
	0	6	29

ADMISSIONS DETAIL	Long Term	Short Term	Total
Medicaid Pending	0	0	0
Medical Assistance	0	0	0
Medicare	0	0	0
Private pay	0	0	0
Veterans	0	0	0
Insurance	0	0	0
Hospice	0	0	0
Total Admissions	0	0	0

14

RECORD OF DISCHARGES and DEATHS			
Discharges	3	6	24
Deaths	5	6	6
	8	12	30

MCA CENSUS AT	05/31/20
Traditional	4
Managed Care	0

Medicaid Applications Month End Snapshot	May-20	Apr-20	Mar-20
MA Approved	6	6	4
Pending Applications			
MA Pending - County Asst Office	27	24	20
MA Pending - Current Month	1	8	10
MA Pending - Prior Months	16	15	15
Total pending applications	44	47	45

**May 2020
Financial
Packet**

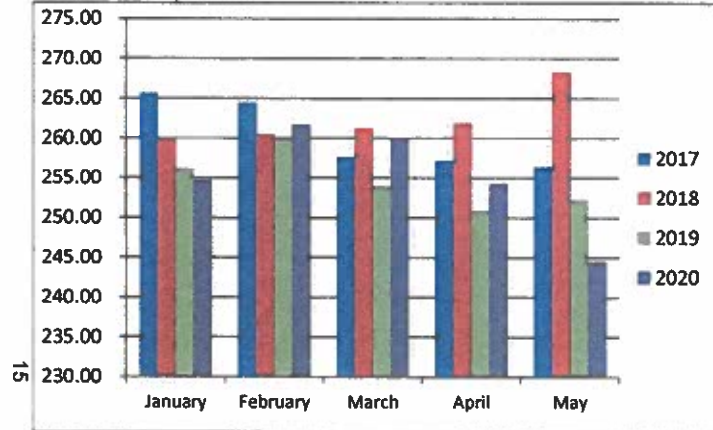
Financial Summary - May 2020

	Actual (YTD)	Budget (YTD)	Variance	PPD	Actual (MTD)	Budget (MTD)	Variance	PPD
Total Revenues	20,293,970	12,910,988	7,382,982	523.63	9,729,548	3,109,104	6,620,444	1,283.92
Total Expenses	12,717,947	13,986,961	(1,269,014)	328.15	2,036,053	3,071,792	(1,035,739)	268.68

	Actual (YTD)	12/31/2019	Variance
Fund Balance	1,472,414	1,319,339	153,075

	Actual (CM)	Actual (PM)	Variance
	153,075	(371,858)	524,933

ADC Trends by Month



	Budget (YTD)	Actual (YTD)	Variance	Prior (YTD)
ADC	267	254.97	(12.03)	254.52
Census Days	40,584	38,756	(1,828)	38,432

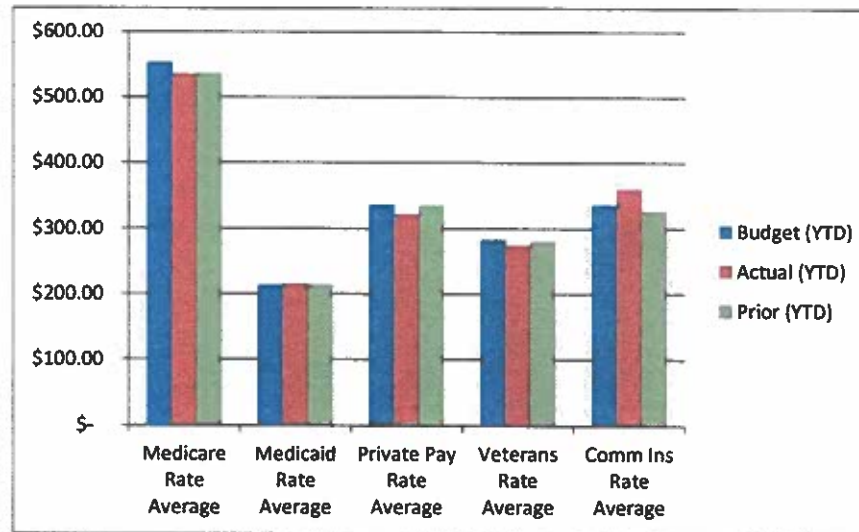
Rev. surplus(shortfall)	(483,567)
-------------------------	-----------

Reimbursement Rate/Mix

	Budget (YTD)	Actual (YTD)	Variance	Prior (YTD)
Avg. Res. Rate	\$ 271.35	\$ 264.53	\$ (6.82)	\$ 254.56

Rev. surplus(shortfall)	(264,338)
-------------------------	-----------

Payor Rates YTD



	Actual (YTD)	Budget (YTD)	Variance
Salary & Benefits	7,862,447	7,789,252	(73,195)
Nursing Salary, Benefits, & Agency	5,890,004	5,422,066	(467,938)
Nursing OT	460,275	436,029	(24,245)
Nursing Agency	758,942	474,586	(284,356)
NHPPD	3.33	3.57	(0.24)

COVID Revenue & Expenses

	Actual (YTD)
Revenue	1,402,455.03
Oper. Expenses	684,392.79
Salary Bonus (Est)	364,674.92
COVID Wages	\$ 249,453.00
Gain/(Loss)	\$ 70,264.87

* direct time spent on COVID functions included in wages

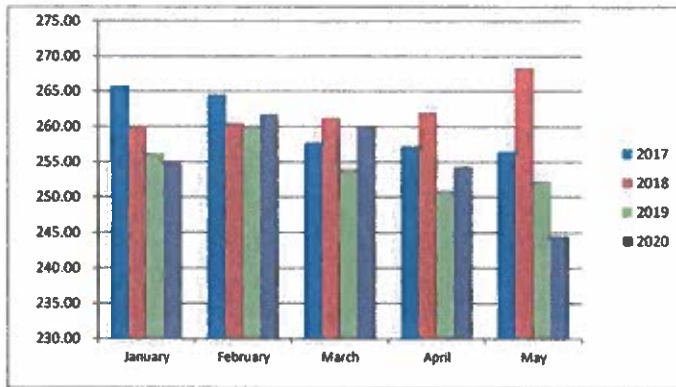
CNRC Key Indicators

Census/Volume	Budget (YTD)	Actual (YTD)	Var. Inc/(May)	Fav/(Unfav)	Prior (YTD)	Actual (YTD)	Var. Inc/(May)	Fav/(Unfav)
Avg Daily Census	267.00	254.97	(12.03)	Unfavorable	254.52	254.97	0.46	Favorable
Census Days	40,584	38,756	(1,828)	Unfavorable	38,432	38,756	324	Favorable

Revenue surplus(shortfall) \$ (483,567)

Transitions Census

Medicare A Census	14	5.73	(8.27)		5.23	5.73	0.50	
Commercial Ins Census	13	7.02	(5.98)		4.90	7.02	2.12	
Private Census	-	6.21	6.21		5.10	6.21	1.11	
Medicaid Census	-	0.77	0.77		6.94	0.77	(6.17)	
Total Census	27	19.72	(7.28)		22.17	19.72	(2.45)	
Admissions	185	94	(91)		107	94	(13)	



ADC trend for May for years indicated

	2017	2018	2019	2020
January	265.71	260.03	256.16	254.71
February	264.46	260.46	259.82	261.69
March	257.65	261.19	253.94	260.10
April	257.20	261.90	250.90	254.30
May	256.42	268.29	252.26	244.45
June	264.60	263.13	256.73	
July	267.52	268.58	263.13	
August	257.23	264.84	258.90	
September	255.50	262.17	263.60	
October	262.48	268.10	262.94	
November	264.97	265.60	258.17	
December	260.81	254.97	250.71	

	1st Qtr	2nd Qtr	3rd Qtr	4th Qtr
2020	1,954	548	-	-
2019	1,218	1,458	2,014	1861
2018	2,235	2,185	1,777	1638

	1st Qtr	2nd Qtr	3rd Qtr	4th Qtr
2020	21.47	8.98	-	-
2019	13.53	16.02	21.89	20.23
2018	24.83	24.01	19.32	17.80

CNRC Key Indicators

	Budget (YTD)	Actual (YTD)	Var. Inc/(May)	Fav/(Unfav)	Prior (YTD)	Actual (YTD)	Var. Inc/(May)	Fav/(Unfav)
Reimbursement Rate/Mix								
Avg. Room & Board Rate	\$ 254.43	\$ 244.34	\$ (10.09)	Unfavorable	\$ 241.26	\$ 244.34	\$ 3.08	Favorable
Avg. Resident Rev Rate	\$ 271.35	\$ 264.53	\$ (6.82)	Unfavorable	\$ 254.56	\$ 264.53	\$ 9.97	Favorable
Revenue surplus(shortfall)	\$ (264,338)							
Medicare Rate Average	\$ 552.67	\$ 534.51	\$ (18.16)	Unfavorable	\$ 535.95	\$ 534.51	\$ (1.44)	Unfavorable
Medicaid Rate Average	\$ 213.19	\$ 214.70	\$ 1.51	Favorable	\$ 213.39	\$ 214.70	\$ 1.31	Favorable
Private Pay Rate Average	\$ 336.02	\$ 320.60	\$ (15.42)	Unfavorable	\$ 334.73	\$ 320.60	\$ (14.13)	Unfavorable
Veterans Rate Average	\$ 283.59	\$ 273.49	\$ (10.10)	Unfavorable	\$ 279.47	\$ 273.49	\$ (5.98)	Unfavorable
Comm Ins Rate Average	\$ 335.70	\$ 360.00	\$ 24.30	Favorable	\$ 326.51	\$ 360.00	\$ 33.49	Favorable

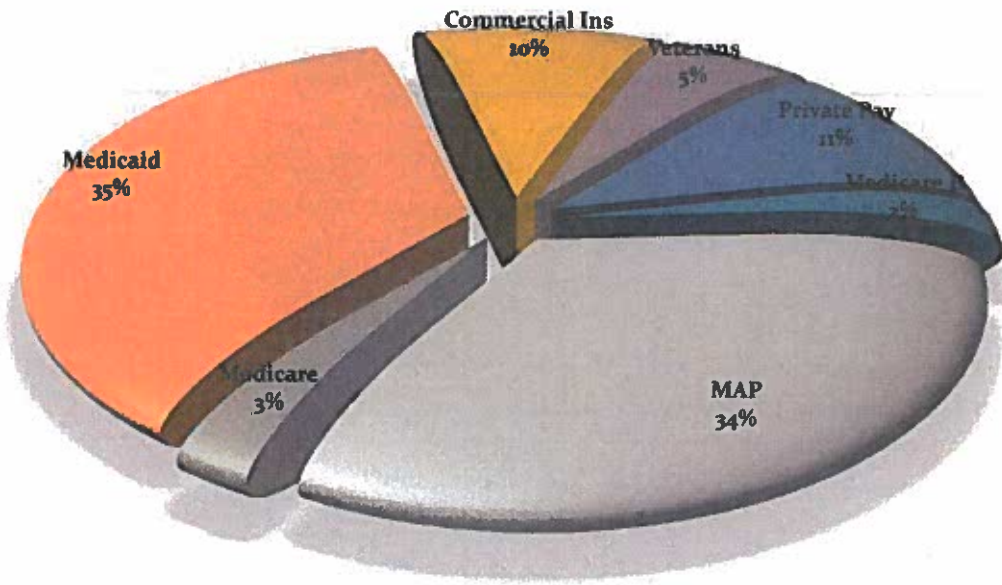
	Goal	Actual (May 2020)	Var. Inc/(May)	Fav/(Unfav)	Prior (Apr)	Actual (May 2020)	Var. Inc/(May)	Fav/(Unfav)
Account Receivable								
% AR > 120 days	14%	19.36%	5.36%	Unfavorable	8.75%	19.36%	10.61%	Unfavorable
Rev - Days In AR	65.00	56.69	(8.31)	Favorable	54.00	56.69	2.69	Unfavorable
W/O as % of Oper. Rev	1%	0.43%	-0.57%	Favorable	0.21%	0.43%	0.22%	Unfavorable

	12/31/2019	5/31/2020	Var. Inc/(May)	Fav/(Unfav)	5/31/2019	5/31/2020	Var. Inc/(May)	Fav/(Unfav)
Fund Balance								
Fund Balance	\$ 1,319,339	\$ 1,472,414	\$ 153,075	Favorable	\$ 1,581,824	\$ 1,472,414	\$ (109,410)	Unfavorable

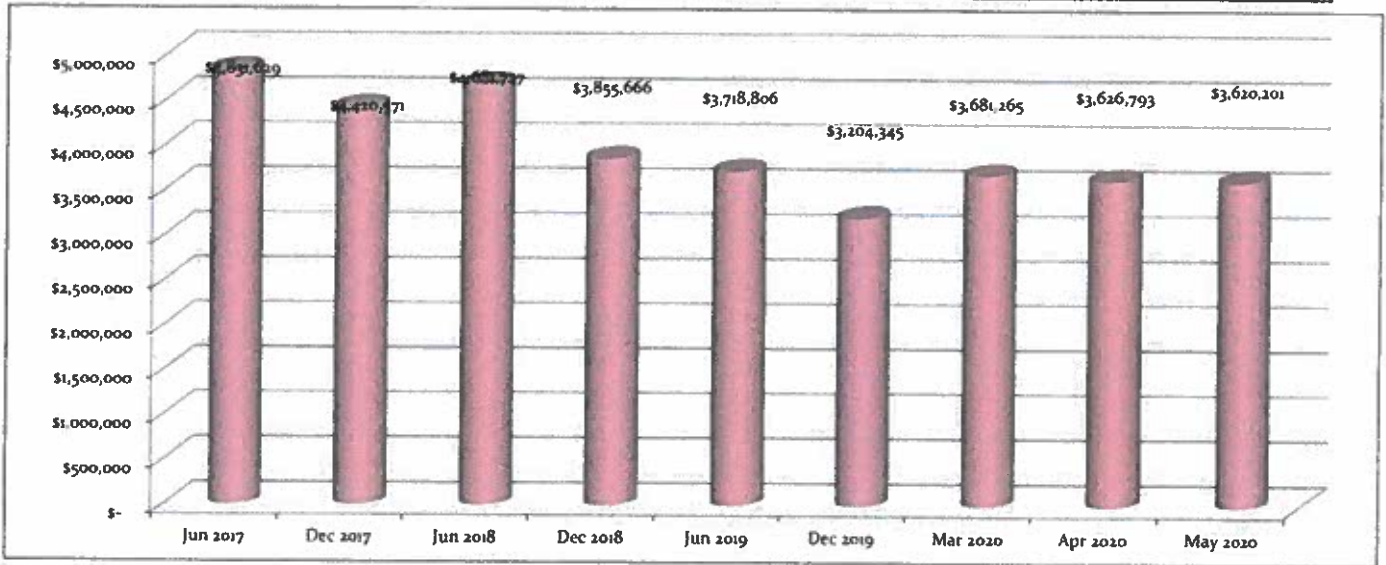
CNRC's Fund Balance Trends - not including Endowment

	Budget 2020	YTD 2020 Actuals	YTD 2019 Actuals	YTD 2018 Actuals	YTD 2017 Actuals	YTD 2016 Actuals	YTD 2015 Actuals	YTD 2014 Actuals
Beginning Fund Balance	1,319,339.03	1,319,339.03	2,572,901.06	2,693,579.39	3,363,991.66	3,639,796.81	3,502,117.66	3,033,096.58
Endowment						(98,199.06)	(216,349.41)	(215,243.60)
Surplus/(Loss)	(1,099,691.00)	153,074.73	(1,197,466.29)	(120,678.33)	(670,412.27)	(275,805.15)	137,679.15	684,264.68
Ending Fund Balance	219,648.03	1,472,413.76	1,375,434.77	2,572,901.06	2,693,579.39	3,363,991.66	3,639,796.81	3,502,117.66

Outstanding Accts Receivable May 31, 2020



HISTORICAL TREND OF ACCOUNTS RECEIVABLE



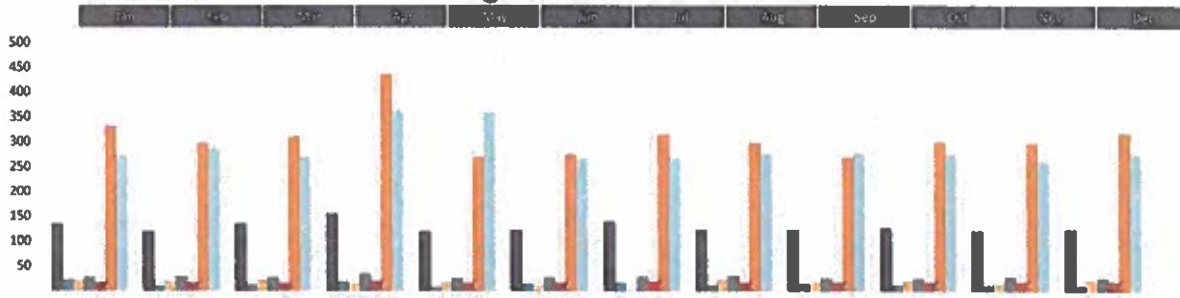
CNRC Key Indicators

Budget (YTD)	Actual (YTD)	Var. Inc./ (May)	Fav/ (Unfav)	Prior (YTD)	Actual (YTD)	Var. Inc./ (May)	Fav/ (Unfav)
40,584	38,756			38,432	38,756		

LABOR COSTS								
Nursing Salary, Wages & Benefits, and Agency - dollars	\$ 5,422,066	\$ 5,890,004	\$ 467,938	Unfavorable	\$ 5,433,524	\$ 5,890,004	\$ 456,480	Unfavorable
Nursing Salary, Wages & Benefits - PPD	\$ 133.60	\$ 151.98	18.38	Unfavorable	\$ 141.38	\$ 151.98	\$ 10.60	Unfavorable
Nursing Overtime - dollars	\$ 436,029	\$ 460,275	\$ 24,245	Unfavorable	\$ 408,504	\$ 460,275	\$ 51,771	Unfavorable
Nursing Overtime - PPD	\$ 10.74	\$ 11.88	1.13	Unfavorable	\$ 10.63	\$ 11.88	\$ 1.25	Unfavorable
Nursing Agency - dollars	\$ 474,586	\$ 758,942	\$ 284,356	Unfavorable	\$ 466,026	\$ 758,942	\$ 292,916	Unfavorable
Nursing Agency - PPD	\$ 11.69	\$ 19.58	7.89	Unfavorable	\$ 12.13	\$ 19.58	\$ 7.46	Unfavorable
NHPPD	3.57	3.33	0.24	Unfavorable	\$ 3.27	3.33	\$ 0.06	Favorable
Dietary Salary, Wages, & Benefits - dollars	\$ 711,453	\$ 607,296	\$ (104,157)	Favorable	\$ 569,700	\$ 607,296	\$ 37,596	Unfavorable
Dietary Salary, Wages, & Benefits - PPD	\$ 17.53	\$ 15.67	(1.86)	Favorable	\$ 14.82	\$ 15.67	\$ 0.85	Unfavorable
Housekeeping & Laundry Salary, Wages & Benefits - dollars	\$ 556,463	\$ 492,323	\$ (64,140)	Favorable	\$ 488,834	\$ 492,323	\$ 3,489	Unfavorable
Housekeeping & Laundry Salary, Wages & Benefits - PPD	\$ 13.71	\$ 12.70	(1.01)	Favorable	\$ 12.72	\$ 12.70	\$ (0.02)	Favorable
Total Operating Expenses	\$ 12,508,197	\$ 12,400,960	\$ (107,237)	Favorable	\$ 11,112,212	\$ 12,400,960	\$ 1,288,747	Unfavorable
Total Operating Expenses - PPD	\$ 308.21	\$ 319.98	11.77	Unfavorable	\$ 289.14	\$ 319.98	\$ 30.84	Unfavorable

OTHER EXPENSES - unfavorable to budget year to date

PPD EXPENSE TRENDS - Claremont Nursing & Rehabilitation Center



Expenses	Jan-20	Feb-20	Mar-20	Apr-20	May-20	Jun-19	Jul-19	Aug-19	Sep-19	Oct-19	Nov-19	Dec-19	Trend
Nursing SW & B	\$ 133.63	\$ 119.14	\$ 134.32	\$ 155.03	\$ 119.56	\$ 122.46	\$ 138.52	\$ 122.36	\$ 123.11	\$ 125.47	\$ 121.27	\$ 123.93	
Overtime	\$ 21.29	\$ 10.17	\$ 11.23	\$ 17.74	\$ 7.06	\$ 14.05	\$ 15.41	\$ 11.49	\$ 14.50	\$ 10.75	\$ 10.91	\$ 10.55	
Therapy	\$ 21.81	\$ 17.71	\$ 21.18	\$ 14.69	\$ 16.23	\$ 9.71	\$ 1.34	\$ 22.40	\$ 16.19	\$ 18.73	\$ 14.42	\$ 20.06	
Dietary & Gift Shop	\$ 27.43	\$ 28.54	\$ 27.02	\$ 33.90	\$ 25.28	\$ 26.62	\$ 28.77	\$ 30.09	\$ 24.71	\$ 24.65	\$ 27.77	\$ 25.78	
Housekeeping & Laundry	\$ 16.08	\$ 15.57	\$ 14.82	\$ 18.51	\$ 15.61	\$ 15.58	\$ 18.54	\$ 16.04	\$ 16.11	\$ 16.05	\$ 17.19	\$ 17.54	
Total Expenses PPD	\$ 330.96	\$ 297.29	\$ 309.32	\$ 434.97	\$ 268.68	\$ 273.81	\$ 313.82	\$ 297.81	\$ 268.20	\$ 299.34	\$ 296.36	\$ 317.09	
Total Revenue PPD	\$ 271.85	\$ 284.67	\$ 268.85	\$ 361.11	\$ 358.67	\$ 263.88	\$ 266.64	\$ 275.46	\$ 276.29	\$ 275.39	\$ 259.34	\$ 273.00	
	\$ -	\$ -	\$ -	\$ -	\$ -	\$ -	\$ -	\$ -	\$ -	\$ -	\$ -	\$ -	

Claremont Nursing & Rehab Center
Income Statement
2020 Actual vs. Budget Comparison

	Actual	May YTD Budget	Inc/(Dec)	Actual	May-20 Budget	Inc/(Dec)
Resident R&B Revenues	9,469,596.27	10,325,978.22	(856,381.95) 1)	1,777,410.75	2,119,909.43	(342,498.68)
Other resident revenues	782,612.45	686,839.17	95,773.28 1)	142,164.69	141,007.16	1,157.53
Misc MA Revenues	8,705,699.37	1,908,877.21	6,796,822.16 2)	7,071,595.75	850,328.61	6,221,267.14
Bad Debt Allowance	(119,277.67)	(83,320.00)	(35,957.67)	(23,953.68)	(16,660.00)	(7,293.68)
Misc Revenues	1,455,339.44	72,613.34	1,382,726.10 3)	762,330.64	14,519.18	747,811.46
Total Revenues	20,293,969.86	12,910,987.94	7,382,981.92	9,729,548.15	3,109,104.38	6,620,443.77
Per Patient Day	523.63	318.13	205.50	1,283.92	375.63	908.29
Salary & Benefits	(7,862,447.31)	(7,789,252.29)	(73,195.02) 4)	(1,397,979.46)	(1,613,493.95)	215,514.49
Operating	(4,538,512.49)	(4,718,944.70)	180,432.21 5)	(641,207.60)	(819,234.15)	178,026.55
Other expenses	(316,987.51)	(1,478,764.43)	1,161,776.92 6)	3,134.16	(639,063.47)	642,197.63
Total Expenses	(12,717,947.31)	(13,986,961.42)	1,269,014.11	(2,036,052.90)	(3,071,791.57)	1,035,738.67
Per Patient Day	(328.15)	(344.64)	16.49	(268.68)	(371.12)	102.44
Adj to Surplus/loss Non-proj	-	-	-	-	-	-
Inc/(Dec) to Fund Balance	7,576,022.55	(1,075,973.48)	8,651,996.03	7,693,495.25	37,312.81	7,656,182.44
Per Patient Day	195.48	(26.51)	221.99	1,015.24	4.51	1,010.73

YTD variance explanations

- 1) Year to date average daily census is 12.03 below budget projections; that is 1,129 days. This equates to an estimated revenue shortfall due to census of \$483,567
 - a) Net rate is \$6.82 below budget causing an estimated revenue shortfall of \$264,337.89 due to rate variance
- 2) Misc. MA Revenues are overbudget \$6.8 million, due almost all IGT payments being made, budget was not set up to start until April.
- 3) This is overbudget approx. \$1.38, mainly due to federal stimulus received for COVID.
- 4) NHPPD's for the month of May was 3.21 to the budget of 3.57
 - 4) Salary and Benefits YTD are \$73K overbudget. This is due to:
 - 4a) FT/PT are overbudget \$14K
 - 4b) OT is overbudget by 27K, mostly due to vacancies in the CNAs
 - 4c) Benefits are 13k overbudget, due to retirement and worker's compensation
 - 5) Operating expenses are underbudget by \$180K. This is due to:
 - 5a) Purchase Professional Services are overbudget 248,051.42, mostly due to Temp personnel services
 - 5b) Building Maintenance is underbudget \$31K.
 - 5c) Office supplies is underbudget by \$53k, with the majority being in Equipment/Furniture Expense
 - 5d) Service supplies is underbudget by 296K. The majority of this is in medical expenses and pharmaceutical supplies expense.
 - 6) Other expenses are underbudget \$1.1 million. This is due to the budget for the Transfer out for IGT starting this month and the actual transfer isn't made y