



# MINUTES

## Cumberland County Claremont Nursing and Rehabilitation Center

Monday, February 22, 2021, 10:00 a.m.  
Commissioners' Hearing Room  
Courthouse, Carlisle, PA

Phone (717) 240-6150 Website: [www.ccpa.net](http://www.ccpa.net)

---

**Board of Commissioners Present:** Commissioners Gary Eichelberger, Jean Foschi and Vincent T. DiFilippo.

**Staff Present:** Stacy Snyder, Acting Chief Clerk; Theresa Kissinger, Administrative Technician; Dana Best, Finance.

**Staff Present via Zoom:** Holly Sherman, Derek Goodhart, Human Resources; Danny Osten, Veterans Affairs; Mark Adams, IMTO; Dana Best, Finance; Nancy Conklin, Ben Boyer, Helen Schultz, Heather Raisig, Brad King, Claremont Nursing and Rehabilitation Center; Samantha Krepps, Communications; Annie Strite, MH/IDD.

**Others Present via Zoom:** Jim Hoefler, Thomas Fink, Madelyn Campbell, Carlisle Borough; Tim Potts, Morgan Plant, Rick Coplen, Dickinson Township; Rick Rovegno, South Middleton Township.

**Call to Order:** Commissioner Eichelberger called the meeting to order.

**Roll Call:** Commissioner Eichelberger, Commissioner Foschi and Commissioner DiFilippo were present.

**Public Comment:** None.

**Approval of Minutes:** Commissioner Foschi made a motion to approve the CNRC Minutes of January 25, 2021. Commissioner DiFilippo seconded the motion and it unanimously carried.

**Human Resources:** Holly Sherman reviewed staffing, job openings, and hires. (see attached) Discussion ensued.

**Marketing and Admission:** Helen Schultz reported on the referrals and admissions for January and summarized the denials. (see attached)

**Finance:** Ben Boyer summarized the financials for January 2021. (see attached) Discussion ensued. Ben reviewed the donations received by the Nursing Home:

Paula, Bradford and Bill Shover Jr., donated \$50.00 in memory of William Shover.

Jennifer Eichhorn and Rick Walsh donated \$100.00 in memory of William Shover.

Dave and Gretchen Runkle donated \$25.00 in memory of William Shover.

Randy and Kim Hofstetter donated \$30.00 in memory of William Shover.

Dennie and Stevie Medvid Family donated \$20.00 in memory of William Shover.

Charlie Austin donated \$15.00 as a thank you.

**Nursing:** Heather Raisig reviewed January 2021 COVID-19 updates. (see attached)

**Maintenance:**

**FSES Update:** Brad King had no updates.

**Potential Buyers of Nursing Home:** One of the potential buyers toured the Nursing Home on Tuesday, February 16, 2021.

**Administrator:** Helen Schultz reported the Carlisle Area Chamber of Commerce gave a donation for Claremont employees; \$288.00 for lunches and seven gift cards of \$25.00 each for a value of \$463.00 total.

Commissioners Foschi made a motion to accept the donation from the Carlisle Area Chamber of Commerce for the employees at Claremont Nursing Home. Commissioner DiFilippo seconded the motion and it unanimously carried.

**Report of Executive Session:** Commissioner Eichelberger reported an executive session was held on January 25, 2020 @ 11:45 a.m. Re: Personnel.

**Other Business:** None

**Public Comment:** Some citizens expressed their concerns about the quality of care for residents and concern for the staff if the nursing home is sold. Some citizens expressed that the Commissioners need to take time and do more studies. Rick Rovegno explained he and his wife have a non-profit trust and would be willing to make a contribution to have some studies.

**Adjournment:** There being no further business to come before the Board, Commissioner DiFilippo made a motion to adjourn the meeting. Commissioner Foschi seconded the motion and it unanimously carried.

Respectfully Submitted,

Theresa Kissinger  
Administrative Technician

**HRR-19b (County Employment Status - Commissioners)**

\*\*\* Nursing Home Only \*\*\*

For the Period Beginning 01/01/2021 and Ending 01/31/2021

**Hires**

**PER DIEM**

	<u>Hire Date</u>	<u>Emp</u>	<u>PL</u>	<u>Dept</u>	<u>Position</u>	<u>Title</u>
1	1/13/2021	12536	NHOME	SKNR1	NH5108	Un-Certified Nurse Aide- TEMP.
2	1/27/2021	12539	NHOME	SKNR1	NH5108	Un-Certified Nurse Aide- TEMP.
3	1/27/2021	12540	NHOME	SKNR1	NH9005	L.P.N. Charge Nurse PRN

**PT**

	<u>Hire Date</u>	<u>Emp</u>	<u>PL</u>	<u>Dept</u>	<u>Position</u>	<u>Title</u>
1	1/13/2021	12412	NHOME	ADMIN	NH8003	Switchboard Operator PT
2	1/27/2021	12318	NHOME	DIET	NH9017	Dietary Aide PT

**Terms**

**FT**

	<u>Term Date</u>	<u>Emp</u>	<u>PL</u>	<u>Dept</u>	<u>Position</u>	<u>Title</u>	<u>Rehire Elig</u>	<u>Reason Code</u>
1	1/4/2021	7056	NHOME	HOUSK	NH3255	Housekeeping Aide	Y	TV-RETIRE
2	1/10/2021	12059	NHOME	HOUSK	NH3245	Housekeeping Aide	O	TV-UNKNOWN
3	1/11/2021	11842	NHOME	NRADM	NH3075	Nursing Transportation Scheduler	Y	TV-OTHER
4	1/13/2021	11759	NHOME	DIET	NH3020	Dietary Aide	O	TV-UNKNOWN
5	1/22/2021	11327	NHOME	SKNR2	NH2014	Nursing Manager	Y	TV-NEWJOB
6	1/26/2021	12499	NHOME	SKNR1	NH2053	L.P.N. Charge Nurse	Y	TV-NEWJOB

**PER DIEM**

	<u>Term Date</u>	<u>Emp</u>	<u>PL</u>	<u>Dept</u>	<u>Position</u>	<u>Title</u>	<u>Rehire Elig</u>	<u>Reason Code</u>
1	1/1/2021	11720	NHOME	SKNR1	NH9033	C.N.A. PRN	Y	TV-OTHER
2	1/1/2021	11769	NHOME	SKNR1	NH9133	C.N.A- Casual	O	TV-OTHER
3	1/6/2021	4457	NHOME	SKNR1	NH9118	C.N.A- Casual	Y	TI-NOSHOW

**PT**

	<u>Term Date</u>	<u>Emp</u>	<u>PL</u>	<u>Dept</u>	<u>Position</u>	<u>Title</u>	<u>Rehire Elig</u>	<u>Reason Code</u>
1	1/16/2021	12324	NHOME	DIET	NH8044	Dietary Aide PT	Y	TV-SCHOOL

## **C.N.A JOB POSTINGS**

### **Heritage Harbor**

<b>posting#</b>	<b>Job Title</b>	<b>FT/PT</b>	<b>Shift</b>	<b>Weekend</b>	<b>Date posted</b>	<b>Close Date</b>
NH3136	C.N.A	FT	2:30P-11P	A	OPEN	until filled
NH3035	C.N.A	FT	2:30p-11p	B	OPEN	until filled
NH3099	C.N.A	FT	2:30p-11p	A	OPEN	until filled
NH3161	C.N.A	FT	630a-3p	B	OPEN	until filled
NH3124	C.N.A	FT	6:30A-7P	B	OPEN	until filled
NH3145	C.N.A	FT	10:30P-7A	B	OPEN	until filled

### **C-WING**

NH3122	C.N.A	FT	2:30P-11P	A	OPEN	until filled
NH3069	C.N.A	FT	6:30a - 3p	B	OPEN	until filled
NH3194	C.N.A	FT	6:30A-7P	A	OPEN	until filled
NH3132	C.N.A	FT	6:30A-7P	EWP	OPEN	until filled

### **1ST FLOOR**

NH3094	C.N.A	FT	2:30P-11P	B	OPEN	until filled
NH3146	C.N.A	FT	5A-130p	A	OPEN	until filled
NH3148	C.N.A	FT	6:30P-7A	EWP	OPEN	until filled

### **2ND FLOOR**

NH3139	C.N.A	FT	2:30P-11P	A	OPEN	until filled
NH3052	C.N.A	FT	2:30P-11P	A	OPEN	until filled
NH3286	C.N.A	FT	230p-11p	B	OPEN	until filled
NH3133	C.N.A	FT	6:30A-3P	A	OPEN	until filled
NH3051	C.N.A	FT	6:30a-3p	A	OPEN	until filled
NH3094	C.N.A	FT	6:30a-3p	B	OPEN	until filled
NH3106	C.N.A	FT	6:30A-7P	A	OPEN	until filled
NH3162	C.N.A	FT	2:30P-11P	B	OPEN	until filled
NH3080	C.N.A	FT	6:30a-7p	B	OPEN	until filled
NH3155	C.N.A	FT	6:30p-7a	B	2/18/2021	2/28/2021

### **3RD FLOOR**

NH3039	C.N.A	FT	2:30P-11P	A	OPEN	until filled
NH3098	C.N.A	FT	2:30P-11P	B	OPEN	until filled
NH3135	C.N.A	FT	1030P-7A	A	OPEN	until filled
NH3153	C.N.A	FT	6:30P-7A	B	OPEN	until filled
NH3266	C.N.A	FT	6:30A-7P	B	OPEN	until filled
NH3288	C.N.A	FT	6:30A-3P	B	2/18/2021	2/28/2021

## **TRANSITIONS**

NH3089	C.N.A	FT	2:30P-11P	A	OPEN	until filled
NH3111	C.N.A	FT	6:30A-3P	B	OPEN	until filled
NH3129	C.N.A	FT	630a-7p	B	OPEN	until filled
NH3157	C.N.A	FT	2:30P-11P	B	OPEN	until filled
NH3147	C.N.A	FT	630a-3p	B	OPEN	until filled
NH3065	C.N.A	FT	6:30P-7A	B	OPEN	until filled
NH3143	C.N.A	FT	6:30P-7A	B	2/18/2021	2/28/2021
NH3064	C.N.A	FT	6:30A-7P	B	2/18/2021	2/28/2021

## **FLOATS**

NH3042	C.N.A	FT	2:30P-11P	B	OPEN	until filled
NH3142	C.N.A	FT	2:30P-11P	A	OPEN	until filled
NH3168	C.N.A	FT	11A-11P	B	OPEN	until filled
NH3173	C.N.A	FT	11A-7P	A	OPEN	until filled
NH3267	C.N.A	FT	3P-3A	B	OPEN	until filled
NH3133	C.N.A	FT	2:30a-3p	B	OPEN	until filled
NH3034	C.N.A	FT	6:30A-3P	B	OPEN	until filled
NH3093	C.N.A	FT	6:30A-3P	B	OPEN	until filled
NH3198	C.N.A	FT	6:30A-3P	A	OPEN	until filled
NH8068	C.N.A	PT	10:30P-7A	A	OPEN	until filled
NH3068	C.N.A	FT	10:30P-7A	A	OPEN	until filled
NH3165	C.N.A	FT	3p-3a	A	OPEN	until filled
NH3073	C.N.A	FT	630a-3p	B	OPEN	until filled
NH3068	C.N.A	FT	10:30P-7A	A	OPEN	until filled

## **RNP**

NH3101	C.N.A	FT	6:30A-3P	A	OPEN	until filled
NH3151	C.N.A	FT	6:30A-3P	A	OPEN	until filled
NH3085	C.N.A	FT	6:30A-3P	B	OPEN	until filled
NH3289	C.N.A	FT	6:30A-3P	B	OPEN	until filled

# LPN POSTINGS

**posting#    Job Title   FT/PT    Shift            Weekend            Date posted            Close Date**

## 1ST FLOOR

NH2041	LPN	FT	630p-7a	B	OPEN	UNTIL FILLED
NH2053	LPN	FT	630a-3p	A	2/18/2021	2/28/2020

## C-Wing

NH2069	LPN	FT	6:30p-7a	A	OPEN	UNTIL FILLED
NH2009	LPN	FT	6:30p-7a	B	OPEN	UNTIL FILLED

## Transitions

NH3306	LPN	FT	6:30p-7a	A	OPEN	UNTIL FILLED
NH2031	LPN	FT	6:30a-7p	B	2/18/2021	2/28/2020
NH2039	LPN	FT	6:30a-7p	B	2/18/2021	2/28/2020

## FLOATS

NH2043	LPN	FT	2:30P-11P	B	OPEN	UNTIL FILLED
NH2030	LPN	FT	2:30P-11P	B	OPEN	UNTIL FILLED
NH2047	LPN	FT	2:30P-11P	A	OPEN	UNTIL FILLED
NH2034	LPN	FT	2:30P-11P	A	OPEN	UNTIL FILLED
NH8027	LPN	PT	6:30A-3P	A	OPEN	UNTIL FILLED
NH8054	LPN	PT	2:30P-11P	B	OPEN	UNTIL FILLED
NH8055	LPN	PT	2:30p-11p	A	OPEN	UNTIL FILLED

## **PRN CASUAL POSITIONS**

### **LPN**

<u>posting#</u>	<u>Job Title</u>	<u>FT/PT</u>	<u>Date posted</u>	<u>Close Date</u>
NH9125	LPN	PRN	OPEN	UNTIL FILLED
NH9123	LPN	PRN	OPEN	UNTIL FILLED

## RN Postings

<u>Posting#</u>	<u>Shift</u>	<u>Job Title</u>	<u>Weekend</u>	<u>FT/PT</u>	<u>Date posted</u>	<u>Close Date</u>
NH8111	10:30P-7AM	RN Sup.	A	PT	OPEN	UNTIL FILLED
NH8112	6:30A-3P	RN Sup.	FRI, SAT,SUN B	PT	OPEN	UNTIL FILLED
NH8113	2:30P-11P	RN Sup.	A	PT	OPEN	UNTIL FILLED
NH8110	11a-7p	RN Sup.	A	PT	OPEN	UNTIL FILLED
NH3028	630p-7a	RN Sup.	B	FT	OPEN	UNTIL FILLED
NH3303	230p-11p	RN Sup.	B	FT	OPEN	UNTIL FILLED
NH8111	6:30P-7AM	RN Sup.	B	FT	OPEN	UNTIL FILLED



# RESIDENT AIDE

## CNRC INTERNAL JOB POSTING

<u>posting #</u>	<u>department</u>	<u>SHIFT</u>	<u>job title</u>	<u>WEEKEND</u>	<u>FLOOR</u>	<u>ft/pt</u>	<u>date posted</u>	<u>close date</u>
NH8119	NURSING	10:30a - 7p	Resident Aide	EOW	FLOAT	PT	open until	filled
NH8117	NURSING	10:30a - 7p	Resident Aide	EOW	FLOAT	PT	open until	filled
NH3314	NURSING	10:30a - 7p	Resident Aide	EOW	FLOAT	FT	open until	filled

Offered |

## Temporary PRN/Casual Positions

### C.N.A. Temp/PRN

posting#	Job Title	FT/PT	Shift	Weekend	Date posted	Close Date
NH5055	C.N.A. Casual - Temp				Open	until filled
NH5056	C.N.A. Casual - Temp				Open	until filled
NH5052	C.N.A. Casual - Temp				Open	until filled

### UNCERTIFIED NURSE AIDE-TEMP/PRN

NH5111	Uncertified Nurse Aide				Open	until filled	offered
--------	------------------------	--	--	--	------	--------------	---------

### GPN TEMP/PRN

NH5117	GPN- Temporary				Open	until filled
NH5118	GPN- Temporary				Open	until filled
NH5119	GPN- Temporary				Open	until filled
NH5120	GPN- Temporary				Open	until filled
NH5121	GPN- Temporary				Open	until filled

### LPN Charge Nurse TEMP/PRN

NH5057	L.P.N. Charge Nurse Casual - Temp				Open	until filled
NH5058	L.P.N. Charge Nurse Casual - Temp				Open	until filled
NH5059	L.P.N. Charge Nurse Casual - Temp				Open	until filled
NH5060	L.P.N. Charge Nurse Casual - Temp				Open	until filled
NH5061	L.P.N. Charge Nurse Casual - Temp				Open	until filled
NH5062	L.P.N. Charge Nurse Casual - Temp				Open	until filled

### RN Supervisor Temp/PRN

NH5063	Nursing Supervisor Casual - Temp				Open	until filled
NH5064	Nursing Supervisor Casual - Temp				Open	until filled
NH5065	Nursing Supervisor Casual - Temp				Open	until filled
NH5066	Nursing Supervisor Casual - Temp				Open	until filled
NH5067	Nursing Supervisor Casual - Temp				Open	until filled
NH5068	Nursing Supervisor Casual - Temp				Open	until filled

### Resident Aide Temp/PRN

NH5072	Resident Aide Casual - Temp				Open	until filled
NH5073	Resident Aide Casual - Temp				Open	until filled
NH5074	Resident Aide Casual - Temp				Open	until filled
NH5071	Resident Aide Casual - Temp				Open	until filled
NH5069	Resident Aide Casual - Temp				Open	until filled

### **Housekeeping Aide Temp/PRN**

NH5075	Housekeeping Aide Casual - Temp			Open	until filled
NH5076	Housekeeping Aide Casual - Temp			Open	until filled
NH5077	Housekeeping Aide Casual - Temp			Open	until filled
NH5078	Housekeeping Aide Casual - Temp			Open	until filled
NH5079	Housekeeping Aide Casual - Temp			Open	until filled
NH5080	Housekeeping Aide Casual - Temp			Open	until filled

### **Laundry Aide Temp/PRN**

NH5081	Laundry Aide Casual - Temp			Open	until filled
NH5082	Laundry Aide Casual - Temp			Open	until filled
NH5083	Laundry Aide Casual - Temp			Open	until filled
NH5084	Laundry Aide Casual - Temp			Open	until filled
NH5085	Laundry Aide Casual - Temp			Open	until filled
NH5086	Laundry Aide Casual - Temp			Open	until filled

### **Dietary Aide Temp/PRN**

NH5087	Dietary Aide Casual - Temp			Open	until filled
NH5088	Dietary Aide Casual - Temp			Open	until filled
NH5089	Dietary Aide Casual - Temp			Open	until filled
NH5090	Dietary Aide Casual - Temp			Open	until filled
NH5091	Dietary Aide Casual - Temp			Open	until filled
NH5092	Dietary Aide Casual - Temp			Open	until filled

### **Activities Worker Temp/PRN**

	0 Activities Worker Casual - Temp			Open	until filled
NH5098	Activities Worker Casual - Temp			Open	until filled

### **Maintenance Workers I--Temp/PRN**

NH5100	Maintenance Worker I Casual - Temp			Open	until filled
--------	------------------------------------	--	--	------	--------------

**Summary of Referrals and Admissions  
and other Pertinent Data  
January-21**

**APPROVALS**

	Jan-21	Dec-20	Nov-20
Admitted	0	0	4
Pending admission	2	0	0
discharged home	1	0	0
sent to other SNF	8	0	0
No Beds	0	0	0
Insurance	0	0	3
Pending decision	0	0	0
Respite	0	0	0
Other	1	0	0

**DENIALS**

	Jan-21	Dec-20	Nov-20
Bariatric	2	4	1
Medical	18	8	7
Behavioral	45	23	22
No Beds	53	45	64
Insurance	22	23	26
Cost of Care/Meds	11	4	2
PDPM	0	4	1
Dialysis	15	9	15
Other	18	5	11
Staffing	24	24	36
COVID	54	98	35

**Total Referrals**

Approvals	12	0	7
Denials	262	247	220
	274	247	227

**ADMISSIONS**

Current month referrals	0	0	4
Waiting list	0	0	0
Previous month referrals	0	0	0
	0	0	4

**ADMISSIONS DETAIL**

	Long Term	Short Term	Total
Medicaid Pending	0	0	0
Medical Assistance	0	0	0
Medicare	0	0	0
Private pay	0	0	0
Veterans	0	0	0
Insurance	0	0	0
Hospice	0	0	0
Total Admissions	0	0	0

**RECORD OF DISCHARGES and DEATHS**

Discharges	0	1	13
Deaths	18	22	25
	18	23	38

**MCA CENSUS AT**

**01/31/21**

Traditional	2
Managed Care	0

**Medicaid Applications Month End Snapshot**

	Jan-21	Dec-20	Nov-20
MA Approved	4	2	1
Pending Applications			
MA Pending - County Asst Office	5	6	4
MA Pending - Current Month	0	1	1
MA Pending - Prior Months	1	2	6
Total pending applications	6	9	11

CNRC's Fund Balance Trends - not including Endowment

	Budget 2020	YTD 2020 Actuals	YTD 2019 Actuals	YTD 2018 Actuals	YTD 2017 Actuals	YTD 2016 Actuals	YTD 2015 Actuals	YTD 2014 Actuals
Beginning Fund Balance	1,319,339.03	1,319,339.03	2,572,901.06	2,693,579.39	3,363,991.66	3,639,796.81	3,502,117.66	3,033,096.58
Endowment						(98,199.06)	(216,349.41)	(215,243.60)
Surplus/(Loss)								684,264.68
Surplus/(Loss)	(1,099,691.00)	(746,176.23)	(1,197,466.29)	(120,678.33)	(670,412.27)	(275,805.15)	137,679.15	469,021.08
Ending Fund Balance	<b>219,648.03</b>	<b>573,162.80</b>	<b>1,375,434.77</b>	<b>2,572,901.06</b>	<b>2,693,579.39</b>	<b>3,363,991.66</b>	<b>3,639,796.81</b>	<b>3,502,117.66</b>

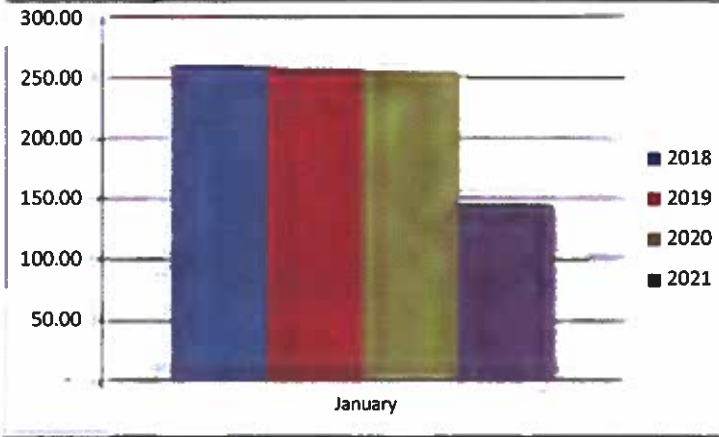
### Financial Summary - January 2021

	Actual (YTD)	Budget (YTD)	Variance	PPD	Actual (MTD)	Budget (MTD)	Variance	PPD
Total Revenues	667,991	2,911,620	(2,243,630)	148.41	667,991	2,911,620	(2,243,630)	148.41
Total Expenses	2,272,973	2,667,032	(394,059)	504.99	2,272,973	2,667,032	(394,059)	504.99

	Actual (YTD)	12/31/2020	Variance
Fund Balance	(194,106)	573,163	(767,269)

	Actual (CM)	Actual (PM)	Variance
	(194,106)	573,163	(767,269)

#### ADC Trends by Month



	Budget (YTD)	Actual (YTD)	Variance	Prior (YTD)
ADC	267	145.19	(121.81)	254.71
Census Days	8,277	4,501	(3,776)	7,896

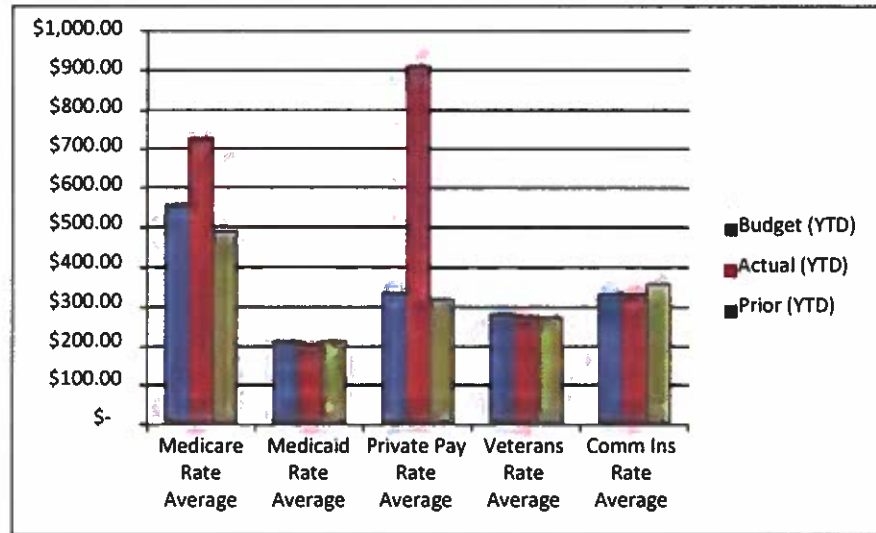
Rev. surplus(shortfall)	(975,316)
-------------------------	-----------

#### Reimbursement Rate/Mix

	Budget (YTD)	Actual (YTD)	Variance	Prior (YTD)
Avg. Res. Rate	\$ 237.64	\$ 258.29	\$ 20.65	\$ 264.82

Rev. surplus(shortfall)	92,944
-------------------------	--------

#### Payor Rates YTD



	Actual (YTD)	Budget (YTD)	Variance
Salary & Benefits	1,540,731	1,610,709	69,978
Nursing Salary, Benefits, & Agency	988,244	1,095,189	106,946
Nursing OT	106,141	82,985	(23,156)
Nursing Agency	638	88,568	87,930
NHPPD	3.67	3.57	0.10

#### COVID Revenue & Expenses

	Actual (YTD)
Revenue	-
Oper. Expenses	203,261.92
Salary Bonus (Est)	-
COVID Wages	\$ -
Lost Revenue (Est)	\$ -
Gain/(Loss)	\$ (203,261.92)

\* direct time spent on COVID functions included in wages

**CLAREMONT NURSING AND REHABILITATION CENTER  
BOARD MEETING  
COVID-19 UPDATE  
February 22, 2021**

**Presented by Heather A. Raisig RN, DON**

<p><b>DOH ACTIVITY</b></p> <p><b>2/5/20 Focused Infection Control Survey and Complaint Survey</b></p>	<p>➤ Due to outbreak, facility continues to have Focused Infection Control Surveys:</p> <ul style="list-style-type: none"> <li>• Per surveyor anticipate every 2-3 weeks while Outbreak Status continues</li> <li>• Focus Infection Control Survey—no deficient practice</li> <li>• Complaint survey—Anonymous staff “administering vaccines to staff who have been positive in last 30 days”—substantiated; no deficient practice</li> </ul>														
<p><b>PANDEMIC SUPPORT</b></p> <p><b>RCCAT-now replace RRCHP</b></p> <ul style="list-style-type: none"> <li>• Assisting with staffing</li> <li>• Monoclonal antibody</li> </ul>	<p>➤ No communications or interactions since administration of antibodies</p> <p>➤ RCCAT available if facility needs to reach out for support or staffing crisis due to on-going pandemic</p>														
<p><b>COVID STATUS</b></p> <p><b>Current Outbreak occurring Since 11/6/20</b></p> <p><b>Continue outbreak testing Every 3-5 days until no new cases x 14d</b></p>	<p>Facility continues with Pandemic Outbreak Management of COVID 19 since November 6, 2020.</p> <p>Facility beginning to see previous COVID residents from November test positive for COVID after 90 days with several negative results prior to converting to Active Covid case. Discussions/reviews with PA Epidemiology continue.</p> <p>Continue on-going communication with State Epidemiologist for cohorting strategies, admission/re-admission placement, exposure/quarantines re: staff.</p> <p>Cohorting Strategies and Zones continue to be fluid and ever changing based on exposure and COVID residents/employees.</p> <p><b>UPDATED 2/22/2021 am—Refer to Facility Website for most recent statistics</b></p> <p><b>EMPLOYEES</b></p> <ul style="list-style-type: none"> <li>➤ 89</li> <li>➤ 5 active surveillances cases</li> </ul> <p><b>RESIDENTS</b></p> <ul style="list-style-type: none"> <li>➤ 136</li> <li>➤ 2 Active cases impacting 2 units (HH, 2<sup>nd</sup> floor)</li> </ul>														
<p><b>Testing Capacity</b></p> <p><b>Facility presently has no concerns with testing capacity</b></p>	<p>Facility has 3 contracts for COVID testing for PCR results, and has ability to do POC antigen testing</p>														
<p><b>MANDATED TESTING</b></p> <p><b>New Regulation Requires Routine testing of Staff based on County Positivity Rates</b></p> <p><b>County Rates Monitored biweekly for testing frequency</b></p> <p><b>Current County rate reviewed 2/12 capturing data through 2/10 = 6.2</b></p> <p><b>Due to current NOV 6 outbreak—testing resident and staff 2x/week</b></p>	<table border="1"> <thead> <tr> <th data-bbox="444 1430 818 1591">Table 2: Routine Testing Intervals Vary by Community COVID-19 Activity Level Community COVID-19 Activity</th> <th data-bbox="823 1430 1138 1591">County Positivity Rate in the past week</th> <th data-bbox="1143 1430 1528 1591">Minimum Testing Frequency</th> </tr> </thead> <tbody> <tr> <td data-bbox="444 1591 818 1654">Low</td> <td data-bbox="823 1591 1138 1654">&lt;5%</td> <td data-bbox="1143 1591 1528 1654">Once a month</td> </tr> <tr> <td data-bbox="444 1654 818 1717">Medium</td> <td data-bbox="823 1654 1138 1717">5% -10%</td> <td data-bbox="1143 1654 1528 1717">Once a week*</td> </tr> <tr> <td data-bbox="444 1717 818 1780">High</td> <td data-bbox="823 1717 1138 1780">&gt;10%</td> <td data-bbox="1143 1717 1528 1780">Twice a week*</td> </tr> </tbody> </table>			Table 2: Routine Testing Intervals Vary by Community COVID-19 Activity Level Community COVID-19 Activity	County Positivity Rate in the past week	Minimum Testing Frequency	Low	<5%	Once a month	Medium	5% -10%	Once a week*	High	>10%	Twice a week*
Table 2: Routine Testing Intervals Vary by Community COVID-19 Activity Level Community COVID-19 Activity	County Positivity Rate in the past week	Minimum Testing Frequency													
Low	<5%	Once a month													
Medium	5% -10%	Once a week*													
High	>10%	Twice a week*													

**CLAREMONT NURSING AND REHABILITATION CENTER**  
**BOARD MEETING**  
**COVID-19 UPDATE**  
**February 22, 2021**

**Presented by Heather A. Raisig RN, DON**

<p><b>Will continue to test bi-weekly due to positivity rates.</b></p>	
<p><b>ADMISSIONS/REAMISSIONS</b>  <b>Facility accepting admissions/readmissions to transitions unit</b></p>	<ul style="list-style-type: none"> <li>➤ Facility has been able to accept admission with closing of 3<sup>rd</sup> floor and decrease census by 50% on 2<sup>nd</sup> floor to allow for staff allocation for re-opening transitions.</li> <li>➤ Due to need for transmission-based precautions upon entry and staffing, present max census projected to 17</li> </ul>
<p><b>VISITATION</b>  <b>Presently continues to be restricted due to COVID outbreak</b>   <b>Compassionate Care/End of Life may occur</b></p>	<ul style="list-style-type: none"> <li>➤ Visitor Screening/Instructions</li> <li>➤ Social Distancing/Source Control</li> <li>➤ Outside preferred based on weather; inside neutral zone</li> <li>➤ In-room with review and approval</li> <li>➤ Most recent guidance re: Indoor Visitation--Facilities should accommodate and support indoor visitation, including visits for reasons beyond compassionate care situations, based on the following guidelines: a) There has been no new onset of COVID-19 cases in the last 14 days and the facility is not currently conducting outbreak testing;</li> </ul>
<p><b>VACCINE CLINICS COVID IMMUNIZATIONS</b></p>	<ul style="list-style-type: none"> <li>➤ CVS completed all three assigned clinic</li> <li>➤ CVS unable to "ration" 2<sup>nd</sup> dose or return to vaccinate residents who only received 1<sup>st</sup> dose due to becoming COVID + after 1<sup>st</sup> vaccine and receiving antibody treatment</li> </ul> <p>Resident Vaccine Status 2/20/21:</p> <ul style="list-style-type: none"> <li>➤ 1<sup>st</sup> Floor—1 resident refused; 1 resident request—unable to receive either dose d/t COVID + status and hospitalization</li> <li>➤ 2<sup>nd</sup> Floor—all residents presently received full vaccination status; 1 previously positive resident in Nov with full vaccination; COVID + 2/19. <b>Case lifted to State Epidemiology for CDC Vaccine Breakthrough Study</b></li> <li>➤ HH—2 resident refusals; 1 resident previously positive in Nov 2020 with full vaccination; COVID + 2/12. <b>Case lifted to State Epidemiology for review</b></li> <li>➤ C wing—9 residents need 2<sup>nd</sup> dose due to antibody treatment (4/21); 1 resident needs 2<sup>nd</sup> dose d/t hospitalization</li> <li>➤ Transitions—1 out of 9 residents received vaccination prior to admission; remaining residents without vaccination</li> </ul> <p>Facility currently working with pharmacy on vaccines for those with antibody treatment, and questioning process for new admits/new hires.</p>



January 2021

Financial

Packet

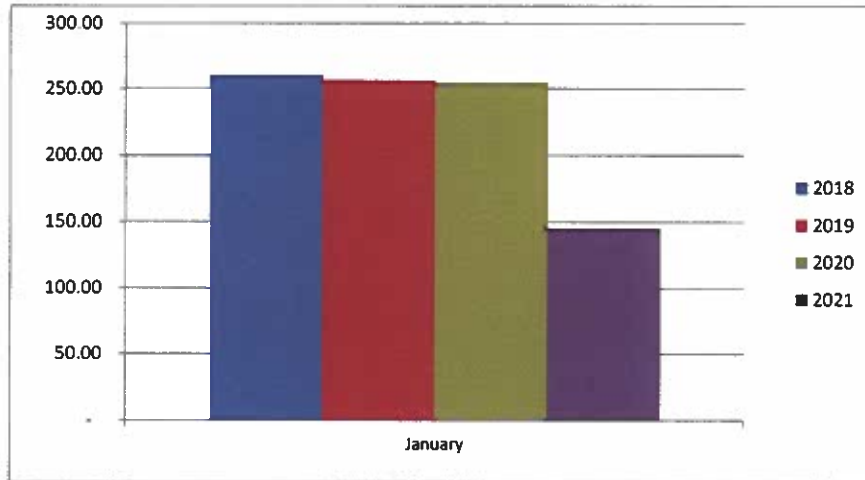
**CNRC Key Indicators**

	Budget (YTD)	Actual (YTD)	Var. Inc/(Jan)	Fav/(Unfav)	Prior (YTD)	Actual (YTD)	Var. Inc/(Jan)	Fav/(Unfav)
<b>Census/Volume</b>								
Avg Daily Census	267.00	145.19	(121.81)	Unfavorable	254.71	145.19	(109.52)	Unfavorable
Census Days	8,277	4,501	(3,776)	Unfavorable	7,896	4,501	(3,395)	Unfavorable

**Revenue surplus(shortfall)**    \$ (975,316)

**Transitions Census**

Medicare A Census	14	-	(14.00)		8.84	-	(8.84)	
Commercial Ins Census	13	-	(13.00)		9.23	-	(9.23)	
Private Census	-	-	-		4.29	-	(4.29)	
Medicaid Census	-	-	-		-	-	-	
Total Census	27	-	(27.00)		22.36	-	(22.36)	
Admissions	37	-	(37)		37	-	(37)	



ADC trend for January for years indicated

	2018	2019	2020	2021
January	260.03	256.16	254.71	145.19
February	260.46	259.82	261.69	
March	261.19	253.94	260.10	
April	261.90	250.90	254.30	
May	268.29	252.26	244.45	
June	263.13	256.73	237.23	
July	268.58	263.13	225.26	
Aug	264.84	258.90	222.32	
Sept	262.17	263.60	220.10	
October	268.10	262.94	216.00	
November	265.60	258.17	198.90	
December	254.97	250.71	165.45	

**Skilled Census - Days**

	1st Qtr	2nd Qtr	3rd Qtr	4th Qtr
2021	201	-	-	-
2020	1,954	656	468	821
2019	1,218	1,458	2,014	1861

**Skilled ADC**

	1st Qtr	2nd Qtr	3rd Qtr	4th Qtr
2021	6.48	-	-	-
2020	21.71	7.21	5.09	8.92
2019	13.53	16.02	21.89	20.23

**CNRC Key Indicators**

	Budget (YTD)	Actual (YTD)	Var. Inc/(Jan)	Fav/(Unfav)	Prior (YTD)	Actual (YTD)	Var. Inc/(Jan)	Fav/(Unfav)
<b>Reimbursement Rate/Mix</b>								
Avg. Room & Board Rate	\$ 226.49	\$ 237.98	\$ 11.49	Favorable	\$ 249.24	\$ 237.98	\$ (11.26)	Unfavorable
Avg. Resident Rev Rate	\$ 237.64	\$ 258.29	\$ 20.65	Favorable	\$ 264.82	\$ 258.29	\$ (6.53)	Unfavorable
<b>Revenue surplus(shortfall)</b>	<b>\$ 92,944</b>							
Medicare Rate Average	\$ 552.67	\$ 727.82	\$ 175.15	Favorable	\$ 491.87	\$ 727.82	\$ 235.95	Favorable
Medicaid Rate Average	\$ 213.19	\$ 206.50	\$ (6.69)	Unfavorable	\$ 214.53	\$ 206.50	\$ (8.03)	Unfavorable
Private Pay Rate Average	\$ 336.02	\$ 910.12	\$ 574.10	Favorable	\$ 321.09	\$ 910.12	\$ 589.03	Favorable
Veterans Rate Average	\$ 283.59	\$ 278.73	\$ (4.86)	Unfavorable	\$ 274.90	\$ 278.73	\$ 3.83	Favorable
Comm Ins Rate Average	\$ 335.70	\$ 334.44	\$ (1.26)	Unfavorable	\$ 360.61	\$ 334.44	\$ (26.17)	Unfavorable

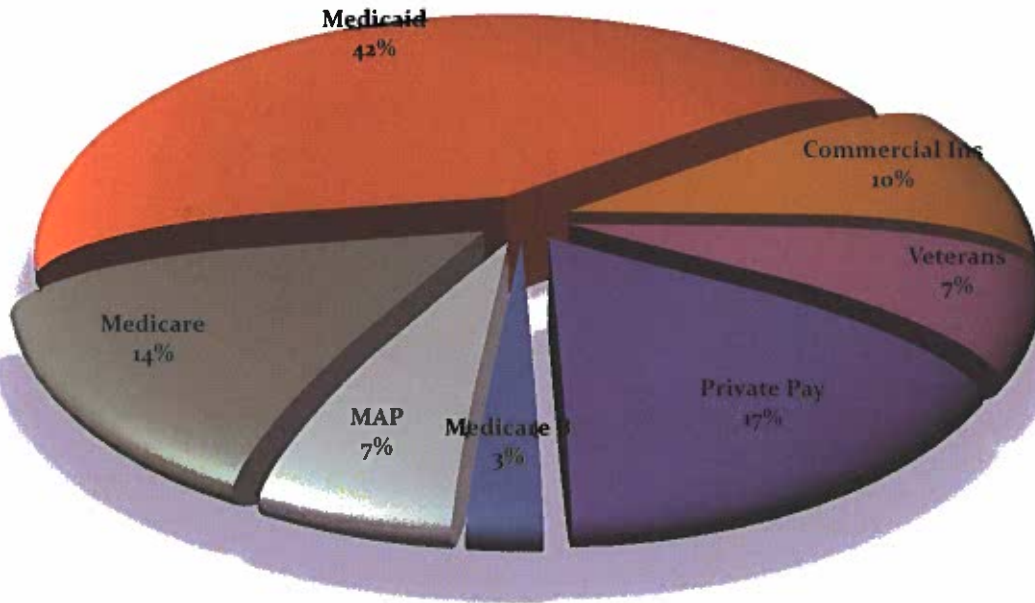
	Goal	Actual (Jan 2021)	Var. Inc/(Jan)	Fav/(Unfav)	Prior (Jan)	Actual (Jan 2021)	Var. Inc/(Jan)	Fav/(Unfav)
<b>Account Receivable</b>								
% AR > 120 days	14%	23.29%	9.29%	Unfavorable	10.36%	23.29%	12.93%	Unfavorable
Rev - Days in AR	65.00	52.08	(12.92)	Favorable	57.27	52.08	(5.19)	Favorable
W/O as % of Oper. Rev	1%	0.00%	-1.00%	Favorable	0.00%	0.00%	0.00%	Favorable

	12/31/2020	1/31/2021	Var. Inc/(Jan)	Fav/(Unfav)	1/31/2020	1/31/2021	Var. Inc/(Jan)	Fav/(Unfav)
<b>Fund Balance</b>								
Fund Balance	\$ 573,163	\$ (194,106)	\$ (767,269)	Unfavorable	\$ 1,124,106	\$ (194,106)	\$ (1,318,212)	Unfavorable

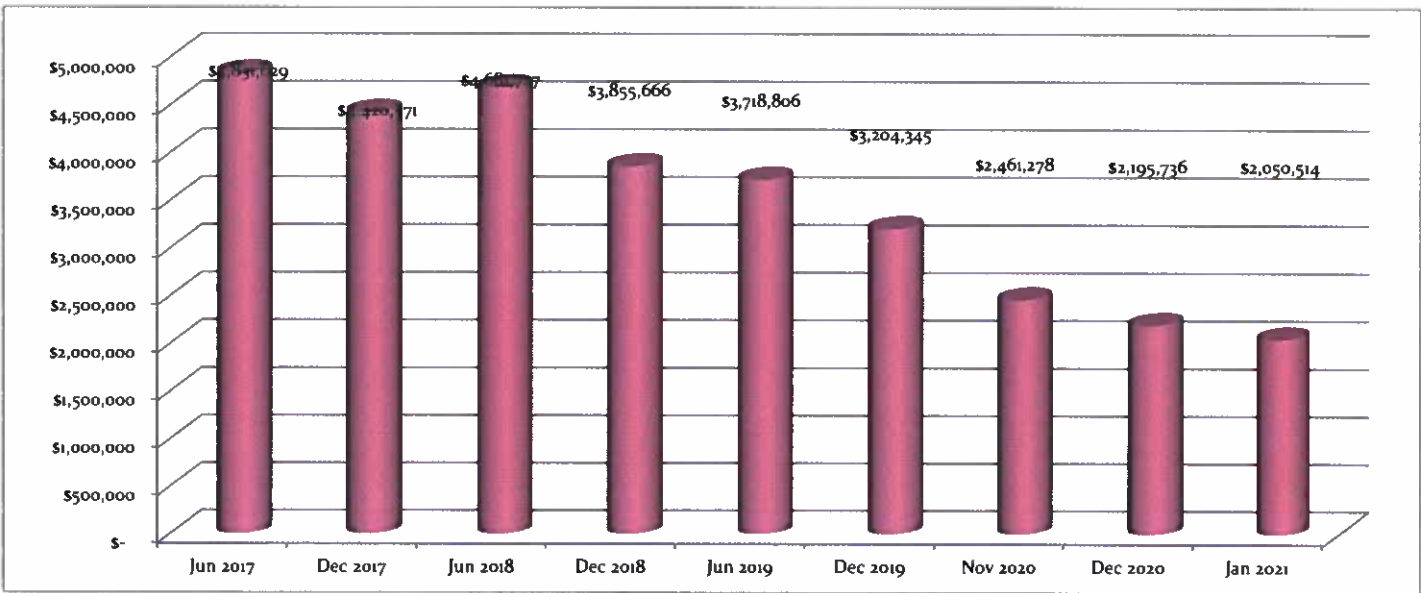
CNRC's Fund Balance Trends - not including Endowment

	Budget 2021	YTD 2021 Actuals	YTD 2020 Actuals	YTD 2019 Actuals	YTD 2018 Actuals	YTD 2017 Actuals	YTD 2016 Actuals	YTD 2015 Actuals	YTD 2014 Actuals
Beginning Fund Balance	573,162.80	573,162.80	1,319,339.03	2,572,901.06	2,693,579.39	3,363,991.66	3,639,796.81	3,502,117.66	3,033,096.58
Endowment							(98,199.06)	(216,349.41)	(215,243.60)
Surplus/(Loss)									684,264.68
Surplus/(Loss)	(329,769.00)	(767,268.78)	(989,119.70)	(1,197,466.29)	(120,678.33)	(670,412.27)	(275,805.15)	137,679.15	469,021.08
Ending Fund Balance	<b>243,393.80</b>	<b>(194,105.98)</b>	<b>330,219.33</b>	<b>1,375,434.77</b>	<b>2,572,901.06</b>	<b>2,693,579.39</b>	<b>3,363,991.66</b>	<b>3,639,796.81</b>	<b>3,502,117.66</b>

### Outstanding Accts Receivable January 31, 2021



### HISTORICAL TREND OF ACCOUNTS RECEIVABLE

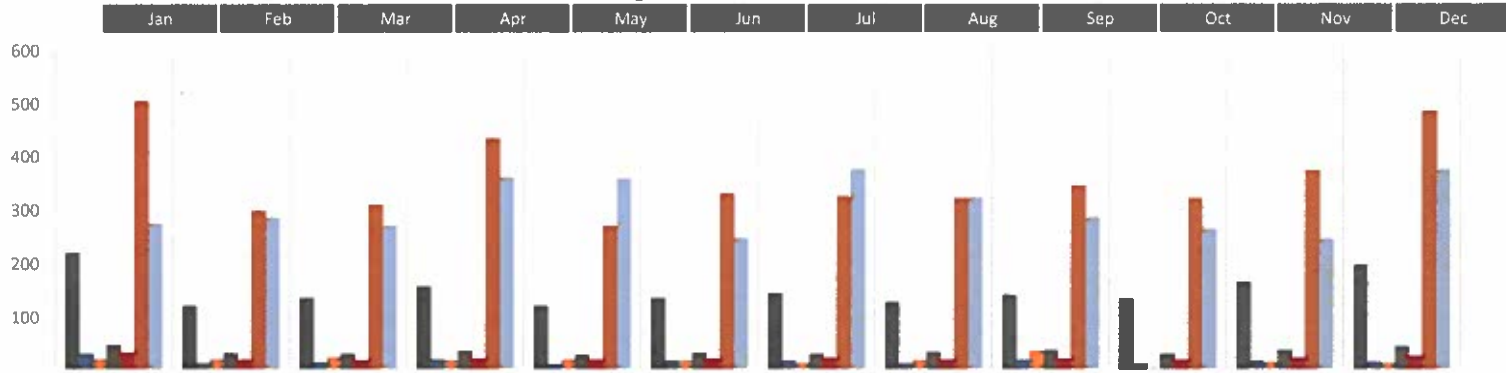


**CNRC Key Indicators**

Budget (YTD)	Actual (YTD)	Var. Inc./(Jan)	Fav/(Unfav)	Prior (YTD)	Actual (YTD)	Var. Inc./(Jan)	Fav/(Unfav)
8,277	4,501			7,896	4,501		

<b>LABOR COSTS</b>							
<b>Nursing Salary, Wages &amp; Benefits, and Agency - dollars</b>	\$ 1,095,189	\$ 988,244	\$ (106,946)	Favorable	\$ 1,276,606	\$ 988,244	\$ (288,362) Favorable
Nursing Salary, Wages & Benefits - PPD	\$ 132.32	\$ 219.56	\$ 87.24	Unfavorable	\$ 161.68	\$ 219.56	\$ 57.88 Unfavorable
<b>Nursing Overtime - dollars</b>	\$ 82,985	\$ 106,141	\$ 23,156	Unfavorable	\$ 141,117	\$ 106,141	\$ (34,976) Favorable
Nursing Overtime - PPD	\$ 10.03	\$ 23.58	\$ 13.56	Unfavorable	\$ 17.87	\$ 23.58	\$ 5.71 Unfavorable
<b>Nursing Agency - dollars</b>	\$ 88,568	\$ 638	\$ (87,930)	Favorable	\$ 221,494	\$ 638	\$ (220,856) Favorable
Nursing Agency - PPD	\$ 10.70	\$ 0.14	\$ (10.56)	Favorable	\$ 28.05	\$ 0.14	\$ (27.91) Favorable
<b>NHPPD</b>	<b>3.57</b>	<b>3.67</b>	<b>(0.10)</b>	Favorable	3.12	3.67	\$ 0.55 Favorable
<b>Dietary Salary, Wages, &amp; Benefits - dollars</b>	\$ 154,930	\$ 128,753	\$ (26,178)	Favorable	\$ 126,436	\$ 128,753	\$ 2,317 Unfavorable
Dietary Salary, Wages, & Benefits - PPD	\$ 18.72	\$ 28.61	\$ 9.89	Unfavorable	\$ 16.01	\$ 28.61	\$ 12.59 Unfavorable
<b>Housekeeping &amp; Laundry Salary, Wages &amp; Benefits - dollars</b>	\$ 114,120	\$ 97,171	\$ (16,948)	Favorable	\$ 97,928	\$ 97,171	\$ (757) Favorable
Housekeeping & Laundry Salary, Wages & Benefits - PPD	\$ 13.79	\$ 21.59	\$ 7.80	Unfavorable	\$ 12.40	\$ 21.59	\$ 9.19 Unfavorable
<b>Total Operating Expenses</b>	\$ 2,590,479	\$ 2,196,578	\$ (393,902)	Favorable	\$ 2,533,470	\$ 2,196,578	\$ (336,892) Favorable
Total Operating Expenses - PPD	\$ 312.97	\$ 488.02	\$ 175.05	Unfavorable	\$ 320.85	\$ 488.02	\$ 167.17 Unfavorable

# PPD EXPENSE TRENDS - Claremont Nursing & Rehabilitation Center



Expenses	Jan-21	Feb-20	Mar-20	Apr-20	May-20	Jun-20	Jul-20	Aug-20	Sep-20	Oct-20	Nov-20	Dec-20	Trend
Nursing SW & B	\$ 219.42	\$ 119.14	\$ 134.32	\$ 155.03	\$ 119.56	\$ 134.50	\$ 143.86	\$ 126.54	\$ 140.47	\$ 133.56	\$ 163.33	\$ 196.21	
Overtime	\$ 27.56	\$ 10.17	\$ 11.23	\$ 17.74	\$ 7.06	\$ 14.21	\$ 14.94	\$ 8.50	\$ 15.28	\$ 11.52	\$ 13.75	\$ 12.10	
Therapy	\$ 16.99	\$ 17.71	\$ 21.18	\$ 14.69	\$ 16.23	\$ 14.23	\$ 10.18	\$ 15.51	\$ 33.37	\$ 0.56	\$ 11.94	\$ 10.45	
Dietary & Gift Shop	\$ 43.96	\$ 28.54	\$ 27.02	\$ 33.90	\$ 25.28	\$ 29.19	\$ 27.30	\$ 31.40	\$ 34.45	\$ 27.59	\$ 35.29	\$ 41.48	
Housekeeping & Laundry	\$ 29.24	\$ 15.57	\$ 14.82	\$ 18.51	\$ 15.61	\$ 17.56	\$ 19.60	\$ 16.76	\$ 18.58	\$ 16.77	\$ 20.61	\$ 23.37	
Total Expenses PPD	\$ 504.99	\$ 297.29	\$ 309.32	\$ 434.97	\$ 268.68	\$ 329.33	\$ 323.20	\$ 320.92	\$ 344.63	\$ 321.00	\$ 373.99	\$ 487.10	
Total Revenue PPD	\$ 273.36	\$ 284.67	\$ 268.85	\$ 361.11	\$ 358.67	\$ 245.46	\$ 375.52	\$ 322.14	\$ 284.60	\$ 262.16	\$ 243.59	\$ 374.94	
	\$ -	\$ -	\$ -	\$ -	\$ -	\$ -	\$ -	\$ -	\$ -	\$ -	\$ -	\$ -	

Claremont Nursing & Rehab Center  
 CNRC Income Statement Consolidated  
 2021 Actual vs. Budget Comparison

	January YTD			Jan-21		
	Actual	Budget	Inc/(Dec)	Actual	Budget	Inc/(Dec)
Resident R&B Revenues	1,071,138.17	1,874,626.74	(803,488.57) 1)	1,071,138.17	1,874,626.74	(803,488.57)
Other resident revenues	91,430.25	92,318.91	(888.66) 1)	91,430.25	92,318.91	(888.66)
Misc MA Revenues	(504,531.39)	733,167.44	(1,237,698.83) 2)	(504,531.39)	733,167.44	(1,237,698.83)
Bad Debt Allowance	(7,099.95)	(16,660.00)	9,560.05	(7,099.95)	(16,660.00)	9,560.05
Misc Revenues	17,053.51	228,167.10	(211,113.59) 3)	17,053.51	228,167.10	(211,113.59)
<b>Total Revenues</b>	<b>667,990.59</b>	<b>2,911,620.19</b>	<b>(2,243,629.60)</b>	<b>667,990.59</b>	<b>2,911,620.19</b>	<b>(2,243,629.60)</b>
Per Patient Day	148.41	351.77	(203.36)	148.41	351.77	(203.36)
Salary & Benefits	(1,540,731.00)	(1,610,709.16)	69,978.16 4)	(1,540,731.00)	(1,610,709.16)	69,978.16
Operating	(655,846.68)	(979,770.19)	323,923.51 5)	(655,846.68)	(979,770.19)	323,923.51
Other expenses	(76,395.76)	(76,552.70)	156.94	(76,395.76)	(76,552.70)	156.94
<b>Total Expenses</b>	<b>(2,272,973.44)</b>	<b>(2,667,032.05)</b>	<b>394,058.61</b>	<b>(2,272,973.44)</b>	<b>(2,667,032.05)</b>	<b>394,058.61</b>
Per Patient Day	(504.99)	(322.22)	(182.77)	(504.99)	(322.22)	(182.77)
Adj to Surplus/loss Non						
<b>Inc/(Dec) to Fund Balance</b>	<b>(1,604,982.85)</b>	<b>244,588.14</b>	<b>(1,849,570.99)</b>	<b>(1,604,982.85)</b>	<b>244,588.14</b>	<b>(1,849,570.99)</b>
Per Patient Day	(356.58)	29.55	(386.13)	(356.58)	29.55	(386.13)

YTD variance explanations

- 1) Year to date average daily census is 121.81 below budget projections; that is 3,776 days. This equates to an estimated revenue shortfall due to census of \$975,315.57
- 1) Net rate is \$20.65 above budget causing an estimated revenue surplus of \$92,944.08 due to rate variance
- 2) Misc. MA Revenues are underbudget \$1.2 million. This is due to the accrual of the IGT in December and this being reversed in January, the IGT revenue is showing as a negative so far in 2021.
- 3) Misc Revenues are underbudget by approx. \$211K. This is due to there being \$213K budgeted for general fund subsidy so far in 2021 and no actual subsidy happening.
- 4) NHPPD's for the month of January was 3.67 to the budget of 3.57
  - 4a) FT/PT are underbudget \$98K
  - 4b) OT is overbudget by 29K
- 5) Operating expenses are underbudget by \$324K. This is due to:
  - 5a) Purchase Professional Services are underbudget \$155K. This is due to temp personnel services (87K underbudget) and therapies (40K underbudget). This is mainly census driven. CNRC is beginning to take admissions again, but until the census ramps up, we will continue to use less temp service personnel and therapy services.
  - 5b) Utilities are underbudget by 17K.
  - 5c) Office supplies is underbudget by \$23k, due to no major equipment/furniture expense in current year yet.
  - 5d) Service supplies is underbudget \$102K. The majority of this is due to food supplies and medical/pharmaceutical supplies being underbudget. Again, much of this is census driven as there are less residents to by food and medical supplies for.